

DELIC CORP

Expanding always. In *all* ways.

(CSE: DELC) & (OTCQB: DELCF)

You Must Read This Before Continuing

This corporate presentation ("Presentation") is confidential and contains proprietary non-public information regarding Delic Corp ("Delic", the "Company", "we", "us" or "our").

This Presentation is for information purposes only and does not constitute an offer to sell or a solicitation of an offer to buy securities of the Company. The information contained herein has been prepared for the purpose of providing interested parties with general information to assist them in their evaluation of the Delic. Under no circumstances may the contents of this Presentation be reproduced, in whole or in part, in any form or forwarded or further redistributed to any other person. Any forwarding, distribution or reproduction of this document in whole or in part is unauthorized. By accepting and reviewing this document, you acknowledge and agree (i) to maintain the confidentiality of this document and the information contained herein, and (ii) to protect such information in the same manner you protect your own confidential information, which shall be at least a reasonable standard of care. Delic has not authorized anyone to provide prospective purchasers with additional or different information. In this Presentation all amounts are in Canadian dollars unless stated otherwise.

This Presentation constitutes "forward-looking statements," within the meaning of applicable Canadian and United States securities laws. Forward-looking statements are neither historical facts nor assurances of future performance. Instead, they are based on our current beliefs, expectations, assumptions and analyses made by us regarding the future of our business, future plans and strategies, our operational results and other future conditions. These forward-looking statements appear in a number of places throughout this Presentation and can be identified by the use of words, such as "anticipates," or "believes," "budget," "estimates," "expects," or "is expected," "forecasts," "intends," "plans," "scheduled," or variations of such words and phrases or state that certain actions, events or results "may," "might," "will," "would," "could", "should," "continue," or be taken, occur or be achieved. These forward-looking statements relate to, among other things, our future financial performance, financial condition, liquidity, levels of activity, performance, prospects, growth, goals or achievements or other future events. Although we base the forward-looking statements contained in this presentation on assumptions that we believe are reasonable, these forward-looking statements involve known and unknown risks, uncertainties and other factors that may cause actual performance and financial results in future periods to differ materially from those anticipated in our forward-looking statements. Forward-looking statements do not take into account the effect that transactions or non-recurring or other special items announced or occurring after the statements are made have on our business. For example, the regulatory regime in which Delic operates, the novel COVID-19, they do not include the effect of asset impairments or other charges announced or occurring after the forward-looking statements are made. The financial impact of such transactions and non-recurring and other special items can be complex and necessarily depends on the facts particular to each of them. Despite a careful process to prepare and review the forward-looking statements, there can be no assurance that the underlying opinions, estimates, and assumptions will prove to be correct. The purpose of the forward-looking statements is to provide the reader with a description of management's expectations regarding our anticipated future performance and may not be appropriate for other purposes. Furthermore, unless otherwise stated, the forward-looking statements contained in this Presentation are made as of the date of this Presentation and we do not undertake any obligation to update publicly or to revise any of the included forward-looking statements, whether as a result of new information, future events or otherwise unless required by applicable legislation or regulation. The forward-looking statements contained in this document are expressly qualified by this cautionary statement.

This Presentation also contains or references certain market, industry and peer group data which is based upon information from independent industry publications, market research, analyst reports and surveys and other publicly available sources. Although we believe these sources to be generally reliable, such information is subject to interpretation and cannot be verified with complete certainty due to limits on the availability and reliability of raw data, the voluntary nature of the data gathering process and other inherent limitations and uncertainties. We have not independently verified any of the data from third party sources referred to in this presentation and accordingly, the accuracy and completeness of such data is not guaranteed. This Presentation also includes forward-looking statements in respect of potential transactions that are not under contract and no certainty they will complete.

Delic Corp is a leader in new medicines and treatments for a modern world, improving access to health benefits across the country and reframing the conversation on psychedelics.

We own the largest, profitable chain of wellness clinics in the U.S. with 12 locations across nine states, and build in secondary cities to reach the greatest number of patients.

We plan to open 14 more clinics in the next 18 months and have a run rate of \$9M USD.

The related businesses under the umbrella of Delic create a self-sustaining ecosystem that will connect to and drive patients into the clinics.

PROBLEM



Mental health problems are widespread and getting worse, particularly after Covid-19.

51.5 million: Total number of people in the U.S. who have experienced a mental health condition.

Current popular pharmaceutical treatments aren't working for most.

63% of Americans who have used Rx drugs to treat anxiety, depression, PTSD say they still have symptoms.*

40-71% of people who use antidepressants relapse. Response rate is around 30% & side effects are significant.

There's no scalable, trusted network of psychedelic clinics with a repeatable, non-habit forming and effective treatment process.

\$225 billion: Amount spent on mental health treatment and services in 2019.

*This survey was conducted online within the United States by The Harris Poll on behalf of Delic from December 6 - 8, 2021 among 2,037 adults ages 18 and older, among whom 953 suffer from anxiety/depression/PTSD

SOLUTION



Psychedelic treatments have been shown to have high efficacy, and low side effects.

PTSD, major depression, anxiety approved for off-label psychedelic treatments.

Ketamine has a 70% response rate in treatment resistant depression as soon as 24h.

LSD & psilocybin have been shown to reduce depression and anxiety for terminally ill patients.

The largest chain of trusted & accessible patient clinics with high profit margins and repeatable effective treatments puts **Delic** at the center of a burgeoning industry.

83% of Americans with anxiety, depression, PTSD are open to alternative treatments that are proven more effective than Rx medication with fewer side effects.*

MEDIA CLINICS LABS



MARKET POTENTIAL

~32M

people in the US
have used psychedelics at least once

65%

of Americans with anxiety, depression, PTSD
say psychedelic medicine should be available
for treatment-resistant conditions*

\$500B

annual US spend on
prescription drugs

\$238B

annual US spend on mental health
treatments & ancillary services

\$71B

2016 spend to treat
depressive disorders

\$16B

anxiety disorder &
depression treatment market

Delic Corp owns the largest chain of psychedelic wellness clinics in the country and a scalable ecosystem to increase revenue, profit margins and patient base.

CLINIC FINANCIALS | CASE STUDY

Open a Clinic



Cost \$250,000 USD



Break even in ~6 months

Average Clinic Revenue



\$1M USD at ~25-30% operating profit

KETAMINE

Treatment Cost

\$300-750/session
x 6+ monthly boosters

With 12 open today across 9 states, we will add an additional 15 clinics in the next 18 months, bringing access and relief to millions of Americans.

PSILOCYBIN

Treatment Cost

\$10,000/session*
*projected

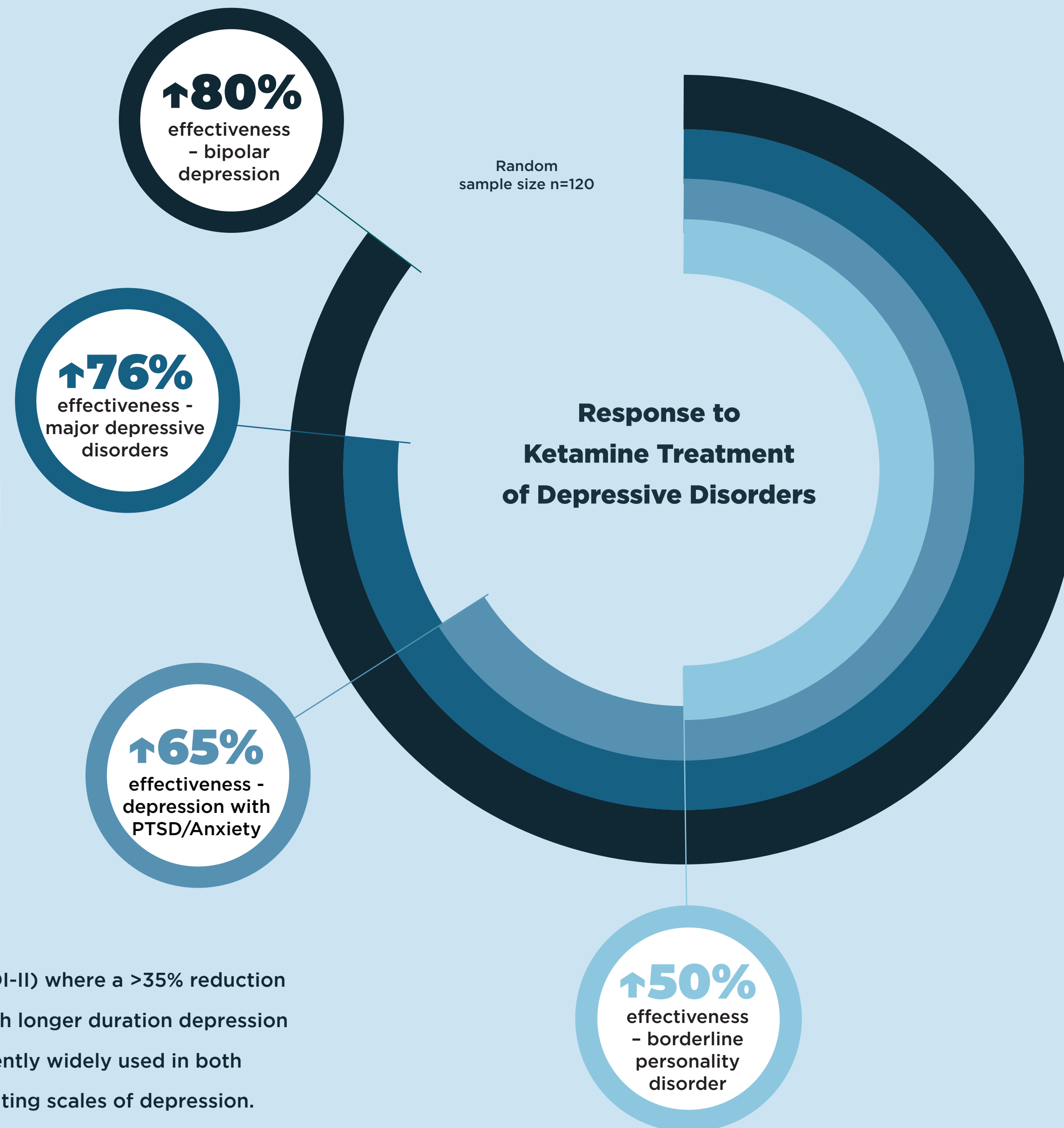
MDMA

Treatment Cost

\$4,000-\$5,000/session*
*projected



PATIENT ECONOMICS | 10-year average spend: \$62,000



Response defined by the Beck Depression Inventory-II (BDI-II) where a >35% reduction in depression index defines effectiveness in individuals with longer duration depression who have not responded to antidepressants. BDI-II is currently widely used in both research and clinical practice and used to validate other rating scales of depression. Results were independent of concomitant/additional antidepressant medications.

Tapping into cultural conversations through Delic-owned media properties and events featuring leading experts, thought leaders and advocates to:

- Drive patients to the clinics for treatment
- Remove stigma around these new medicines
- Discuss what a healthy level of emotional wellness feels like

Meet Delic

The Largest Psychedelic Wellness Event

- Las Vegas, NV on November 6-7, 2021
- Sold out with over 2,500 attendees
- Headliners included Lamar Odom, Duncan Trussell, Molly Maloof, MD, and Dr. Carl Hart
- Tickets for Meet Delic 2022 on sale now!

Reality Sandwich

Digital Lifestyle Magazine

- +5k original articles
- 1.4M views in 2020
- +551 1st page Google rankings
- +7k email subscribers
- 14.6k IG followers

Delic Radio

Podcast

- +43 episodes
- Since Feb 2018
- 100k total streams

As Seen In



SCIENCE | IP, R&D, Proven Products



We develop novel psychedelic products for markets that allow for legal psychedelics and treatment.

Rooted in science and evidence-based research that informs all product lines and ensures innovative treatments are safe and of the highest quality.

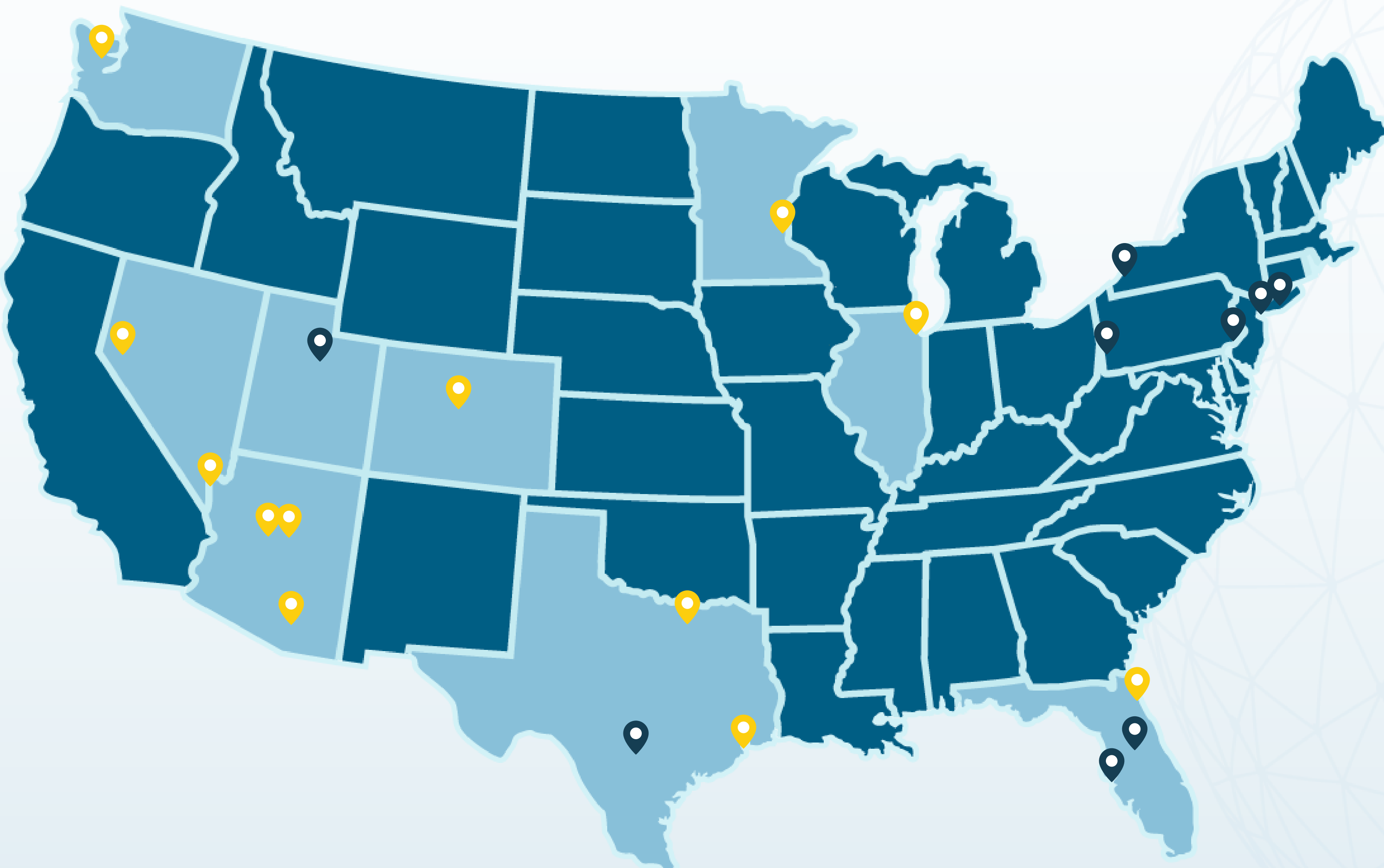
Delic Labs has operated profitably since its founding.

Delic Labs will focus on profit generating contracts as well as IP & novel compound development (patent development) licensing opportunities.

Delic Labs recently received its Section 56 Exemption granted by Health Canada, enabling Delic Labs to focus on research and intellectual property development with psilocybin, MDMA, LSD, DMT, mescaline, 2C-B.

Customers : Biotech Companies | Alcohol & Tobacco | Instrument Manufacturers | Cannabis Producers | Psychedelic Manufacturers

HEALTH | Clinic Services & Retail



The U.S.'s largest retail and physical footprint of ketamine clinics will allow us to scale patient access and increase average spends.

Open Now

- 📍 Phoenix, AZ
- 📍 Tuscon, AZ
- 📍 Denver, CO
- 📍 Chicago, IL
- 📍 Minn/St Paul, MN
- 📍 Seattle, WA
- 📍 Dallas, TX
- 📍 Houston, TX
- 📍 Jacksonville, FL
- 📍 Las Vegas, NV
- 📍 Salt Lake City, UT

Coming Soon

- 📍 Reno, NV
- 📍 San Antonio, TX
- 📍 Tampa Bay, FL
- 📍 Orlando, FL
- 📍 Miami, FL
- 📍 Pittsburgh, PA
- 📍 Philadelphia, PA
- 📍 Yonkers, NY
- 📍 Long Island, NY
- 📍 Buffalo, NY

As new treatments are legalized we will offer additional options with a keen focus on serving secondary cities and the bulk of the population.

Delic has some of the most experienced and successful operators of ketamine clinics in-house. Rather than acquiring overvalued assets or attempting to rejuvenate underperforming operations, we believe our proven real estate, hiring, training, operations and treatment approach will outperform others in the market.

Further, Delic's existing media properties and in-house marketing and communications teams will create demand and win market share in an increasingly competitive industry that relies more and more on marketing, social media, education and word-of-mouth to win patients.

Our team is comprised of proven leaders, executors and free thinkers. Strong industry networks, profitable businesses and successful prior exits ensure we are best positioned to capitalize on the burgeoning psychedelic wellness industry.

OPERATIONS



MATT STANG
CEO/CO-FOUNDER



CRO



ADVISOR



ADVISOR



JACKEE STANG
CCO/CO-FOUNDER



VP OF
PROGRAMMING



PRODUCER



DIRECTOR OF
DEVELOPMENT



KEVIN NICHOLSON
COO



CEO



MATHEW LEE
CFO



CFO



PRESIDENT



DR. MARKUS ROGGEN
CSO



CEO



RESEARCHER



PROFESSOR

DIRECTORS



MATT STANG



CRO



ADVISOR



ADVISOR



MARTIN TOBIAS



CO-FOUNDER



FOUNDER



CEO



SASHKO DESPOTOVSKI



MANAGING
DIRECTOR



INVESTMENT
DIRECTOR



DIRECTOR
OF M&A



KRAIG FOX



CEO &
PRESIDENT



SR. MANAGING
DIRECTOR



PAUL ROSEN



CEO &
CHAIRMAN



EXECUTIVE
CHAIRMAN



PRESIDENT
& CEO

ADVISORS



SHEP GORDON



NY TIMES



FILM AGENT &
PRODUCER



GREG CROWE



CIO



DIRECTOR



DR. DAVE RABIN



CIO &
CO-FOUNDER



ED &
CO-FOUNDER



BOARD
MEMBER



BARBARA BRANAMAN



CEO &
FOUNDER



VP OF MARKETING
& PRODUCT



VP/GM of
HOSTING



KYLE SNOOK



SENIOR
OPERATIONS
EXECUTIVE



INFANTRY
OFFICER



COO



GARYN ANGEL



FOUNDER



PRESIDENT



PRESIDENT



MICHAEL LOVITCH



FOUNDING
PARTNER



BUSINESS
MENTOR



PARTNER



DAVID BELSKY

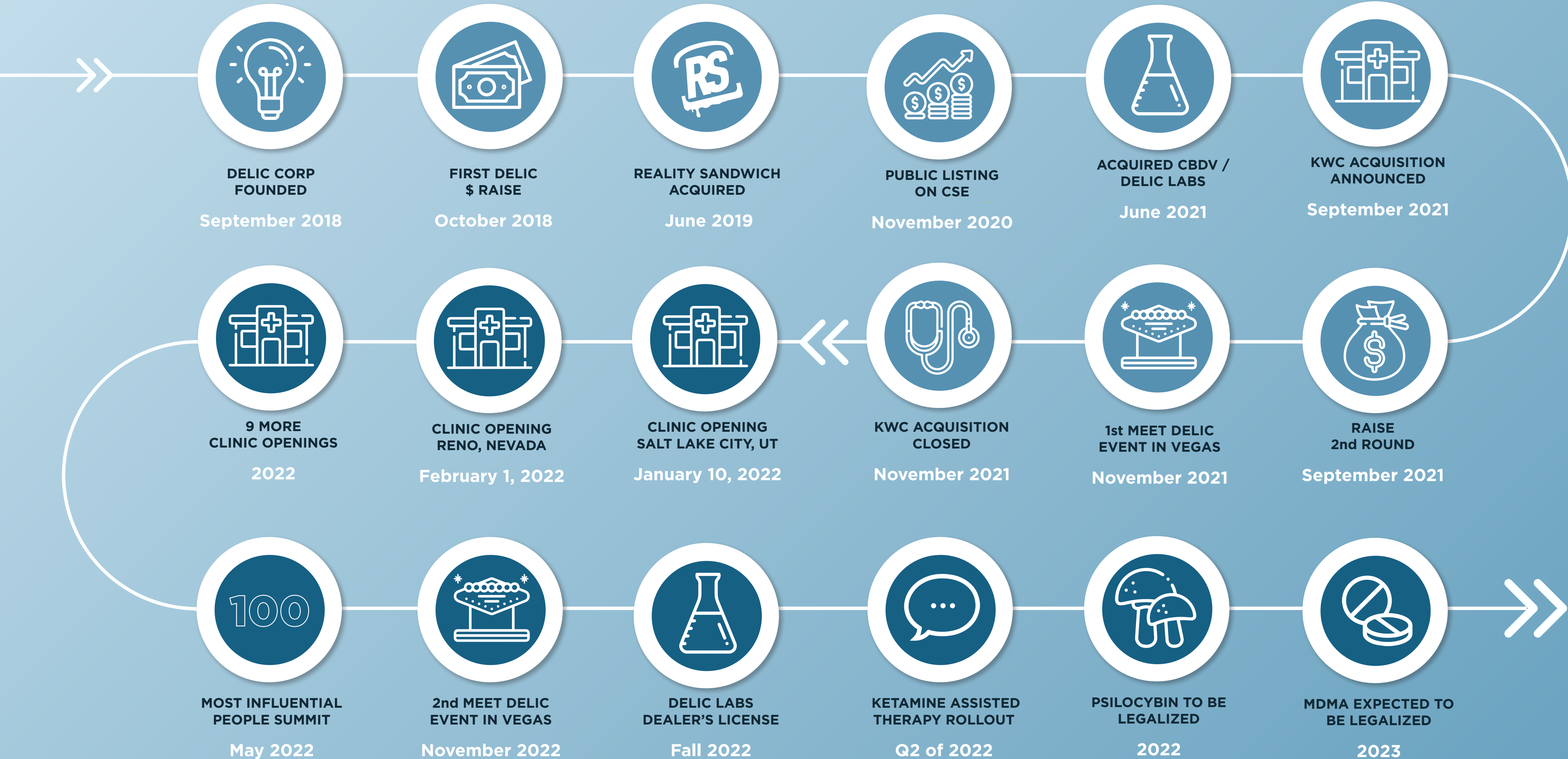


CEO &
FOUNDER



Companies	Ticker	Business Model	Geography	Valuations	Quarterly Revenue	Open U.S. Locations	Locations in Development
Delic Corp	CSE:DELC	Clinics, media	USA	\$25M* <small>*upon conversion of multiple voting shares</small>	N/A	12	15
Field Trip Health	TSX:FTRP	Clinics, drug development	Canada, USA, Netherlands	\$384M	\$0.86M	6	5
Numinus Wellness	TSXV:NUMI	Clinics, drug development	Canada	\$153M	\$0.56M	0	N/A
Ketamine One	NEO:MEDI	Clinics, contact research	Canada	\$37M	N/A	1	3
Braxia	CSE:BRAX	Clinics, drug development	Canada	\$30M	\$0.41M	0	N/A
Novamind	CSE:NM	Clinics, contact research	USA	\$35M	\$1.85M	6	2

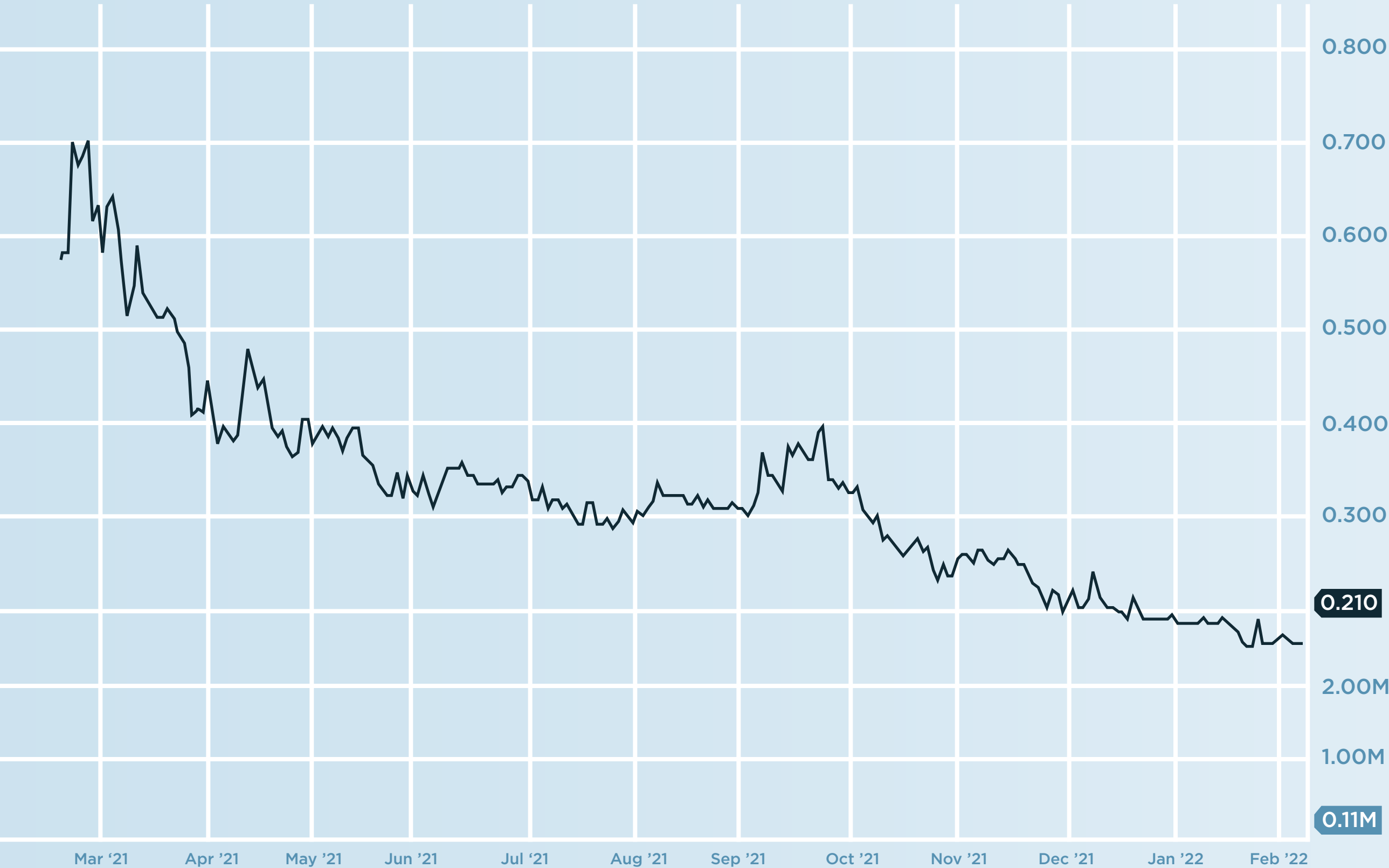
*All figures in \$CAD



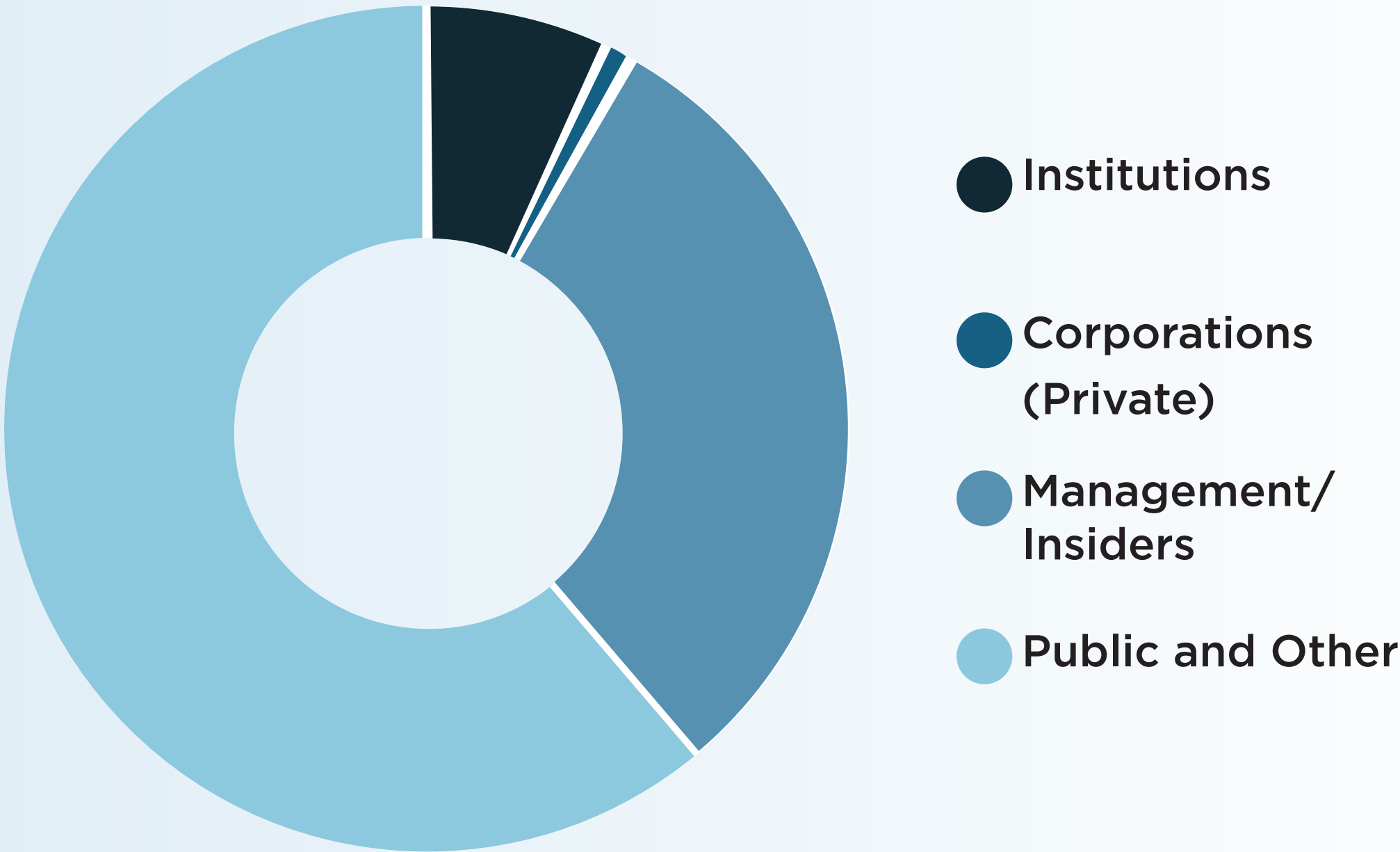
Capital Structure

Market Cap	\$9.7M
52 Week Low	\$0.07
52 Week High	\$0.64

Basic Shares Outstanding	73,126,930
Fully Diluted Shares Outstanding	113,051,375



Ownership Summary



WHY INVEST NOW?

- **Current run rate of \$9M USD.**
- **Built largest, most profitable business model for scaling care directly to patients, with 12 open locations today and 15 more in the next 18 months, increasing spend per visitor, positioned as face of industry.**
- **Focused on fully legal opportunities available now to scale under big tent of resources & reach.**
- **Will have novel high-quality product lines to support catering to new patient categories/clinics to administer treatments as future MDMA & psilocybin treatments become legal.**
- **Well-capitalized to remain opportunistic, accretive as industry evolves.**



Alex Howe

(202) 271-799

alex@deliccorp.com