



NATIONAL STORM RECOVERY



National Storm Recovery Inc. ([NSRI](#)), through its subsidiaries, including National Storm Recovery, LLC (d.b.a. Central Florida Arbor Care and Mulch Manufacturing, Inc.), provides tree services, debris hauling, removal and biomass recycling, manufacturing, packaging and sales of next-generation mulch products. The company's primary corporate objective is to provide a solution for the treatment and handling of tree debris that has been historically sent to local landfills and disposal sites, creating an environmental burden and pressure on disposal sites around the nation.

Environmentally Friendly

NSRI and the solutions provided by its Sustainable Green Team are founded in sustainability. The company's vertically integrated operations begin with the collection of tree debris through its tree services division and collection sites. Tree bio-mass is then moved through the processing division for recycling and manufacturing into a variety of organic, attractive, next-generation mulch products to be packaged and sold to retailers, landscapers, installers and garden centers.

The company's solutions create a synergistic and environmentally beneficial solution to tree and storm waste disposal that historically has created an environmental burden on landfills and disposal sites around the nation.

NSRI's customers include governmental, residential and commercial customers and now big box retailers. The company is headquartered in Florida.

Strategic Acquisition

NSRI in February 2020 acquired 35-year-old industry leader and innovator Mulch Manufacturing, Inc., an Ohio corporation. Structured as a share exchange, this strategic partnership provides National Storm with a significantly larger footprint in the mulch industry.

The acquisition includes Mulch Manufacturing's national and international distribution agreements, an increase in production and packaging capacity, and its sales contracts with numerous big box retailers. Mulch Manufacturing includes mulch production, sawmill operation, Natures Reflections colorant manufacturing and equipment manufacturing.

Next-Generation Products

NSRI's vision and commitment to the environment is paired with Mulch Manufacturing's revolutionary "next-generation" mulch product, Nature's Reflection's Softscape®.

Softscape mulch products, created from natural forest products, are color-enhanced with environmentally safe colorants to provide four-year color retention and are free from contaminants. Safe for people and pets, Softscape allows water and air to penetrate soil and roots, which is vital to plant health

Expansion Plans

NSRI plans to expand its operations through a combination of organic growth, through its partnership with a nationally recognized waste disposal company, and through strategic acquisitions that are both accretive to earnings and positioned for rapid growth from the resulting synergistic opportunities identified.

The company has received final zoning approval for its 100-acre site, located in Lake County, Astatula, Florida, which will serve as the company's flagship tree debris collection site. The facility will also house the company's mulch manufacturing, soil composting and production bagging. This prime location includes a 5,000-square-foot building that contains warehouse and office space. The 100-acre property can accommodate millions of cubic yards of organic debris and will allow National Storm's debris hauling division to realize significant savings on its transportation costs.

NSRI has chosen as its new headquarters the Mulch Manufacturing 100,000-square-foot building in Jacksonville, Florida. The facility comprises centralized operations of Mulch Manufacturing, Inc. and National Storm Recovery, LLC, and has ample room to expand as the needed. Permitting is near completion to open wood recycling yard at the Lane Avenue facility in Jacksonville, Florida

Leadership

NSRI's Sustainable Green Team boasts more than 40 years of next-level experience with mulch manufacturing, treating and caring for trees. This team is guided by a roster of highly qualified professionals:

- Tony Raynor, Chief Executive Officer
- Edward Lee, Chief Operating Officer
- Scott Siefker, Chief Financial Officer
- Ralph Spencer, Director of Business Development, Strategic Acquisitions
- Steve Ogden, ISA-Certified Arborist
- Rick Starcher, Master Chemist
- Peder K. Davisson, Esq., Corporate/Securities Counsel

Company Strengths:

- More than 40 years of next level experience with mulch manufacturing, colorant production, product innovation and treating/caring for trees and tree debris recycling.
- Services include tree removal, trimming, grapple hauling, land clearing, stump grinding, mulch processing, colorant production and packaging, transportation and distribution.
- Acquisition of Mulch Manufacturing provides NSRI a significantly larger footprint nationally and abroad.
- Mulch Manufacturing maintains its historical contracts with big box retailers nationally for bagged mulch sales.
- NSRI benefits from a competitive advantage over other mulch manufacturers because the acquisition of mulch feedstock drives revenue instead of simply being a cost of goods sold.
- Environmentally responsible corporation focused on being “stewards of the environment” in all aspects of the business. The source of feedstock coming from tree services division decreases environmental burden on landfills.
- Ample room for expansion utilizing the 100-acre site in Florida approved as the flagship tree debris collection site and mulch feedstock production facility, as well as the 100,000-sq.-ft. building and 28 acres site in Jacksonville.
- Recipient of Angie’s List Super Service Award in 2018
- Strategic partnership with a national waste disposal company has provided NSRI millions of dollars in cost savings and years of time that would otherwise have been incurred if the Company had needed to secure the required locations and permits that the partnership provided. This partnership represents significant potential expansion opportunity for NSRI.
- Our subsidiary, Nature’s Reflections, manufactures its very own product line of colorant and mulch coloring machines.

Forward-Looking Statements

This document contains forward-looking statements within the meaning of Section 27A of the Securities Act of 1933, as amended and Section 21E of the Securities Exchange Act of 1934, as amended. All forward-looking statements are inherently uncertain as they are based on current expectations and assumptions concerning future events or future performance of the company. Readers are cautioned not to place undue reliance on these forward-looking statements, which are only predictions and speak only as of the date hereof. In evaluating such statements, prospective investors should review carefully various risks and uncertainties identified in this release and matters set in the company's SEC filings. These risks and uncertainties could cause the company's actual results to differ materially from those indicated in the forward-looking statements.

Production Facilities



Callahan, FL

- 6 Bagging lines
- 100 Acres of storage
- Cypress, Pine, Colored & A-Grade, Softscape



Homerville, GA

- Cypress Sawmill & mulch production
- 3 Bagging lines
- 40 Acres of storage
- Cypress A & B grade, Chips, Softscape



Jacksonville, FL (Colorant Plant)

- Production of mulch colorants
- Sale of mulch coloring machinery
- R & D division for new products



Jacksonville, FL

- Production & Bagging
- Mulch production, bagging & prepack
- Coming Soon: Wood recycling collection site
- Coming Soon: Retail sales



Apopka, FL

- Full line of bagged and bulk mulch products
- Wood recycling collection site
- Retail sales



Astatula, FL

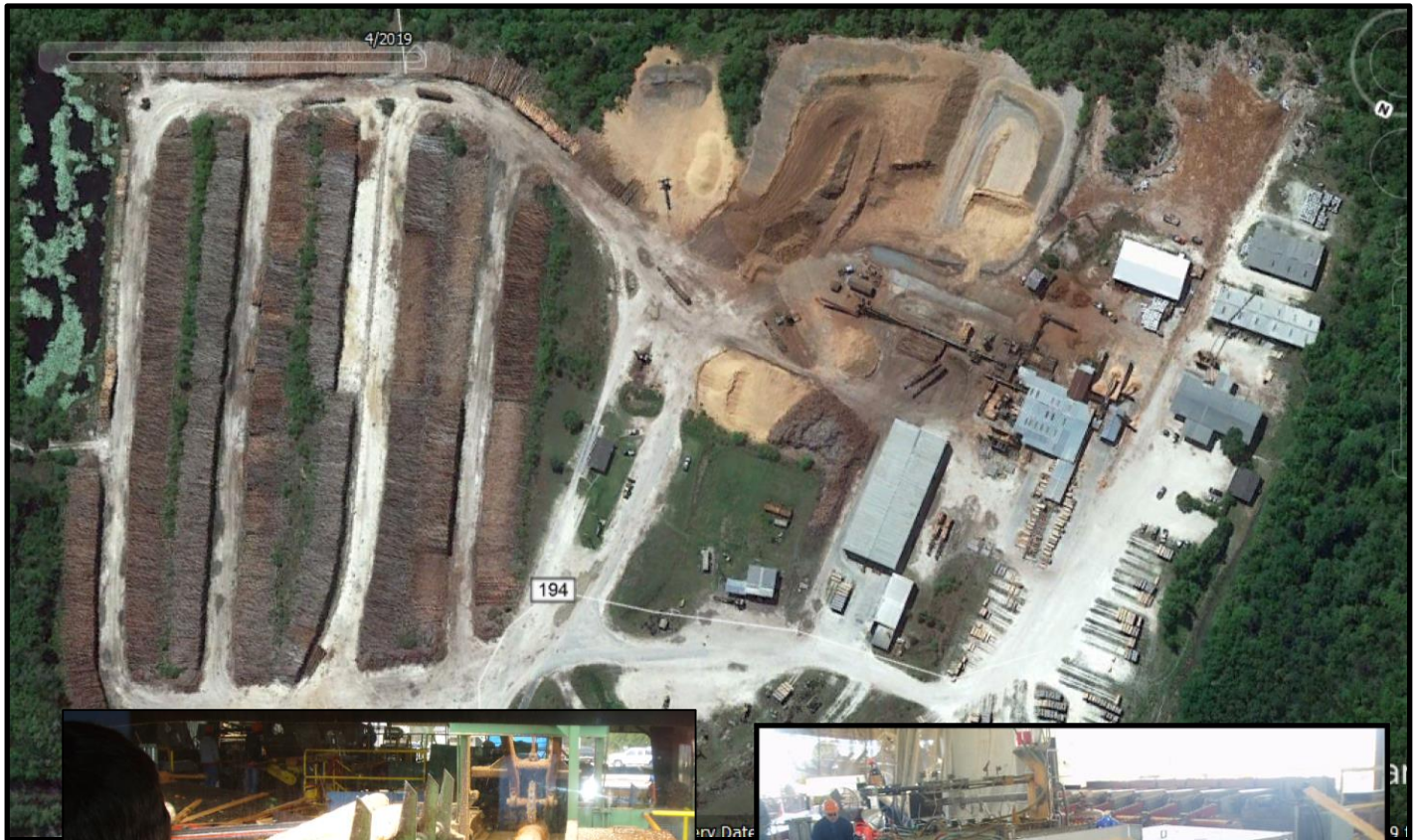
- Full line of bagged and bulk mulch products
- 100 Acres of storage
- Wood recycling collection site
- Retail sales
- Central Florida Arbor Care

Callahan, FL Plant



- Began in 1989.
- 100 acres of storage.
- Cypress, Hardwood, Pine, A- Grade, Next Generation Softscape & Colored Mulch.
- 6 bagging lines.

Homerville, GA Sawmill



- 50 acres – cypress sawmill & mulch products.
- All Bark Mulch, B-Grade Mulch, Playground Chips & Softscape.
- Multiple bagging lines.

Jacksonville Colorant Plant



- Nature's Reflections colorants are made in this plant in Jacksonville, FL.
- This plant is fully capable of duplicating any color or shade required by the customer.
- Also produce special formulated colors for our Softscape line of value-added mulches.
- Continually working on new colorants with additional attributes for future introduction.

Jacksonville, FL Plant



- Large facility with ample room for expansion.
- Only two miles from the CSX rail ramp.
- Currently used for development and production of Softscape manufacturing equipment.
- Production of our Cheetah mulch coloring machine.
- COMING SOON: Wood recycling collection site.
- COMING SOON: Retail location.

Apopka, FL Facility



- Centrally located in Central Florida.
- Wood recycling collection site.
- Equipped to collect wood fiber from the area and process it into a variety of mulch products and distribute those products throughout the Eastern portion of the United States.
- Dual line bagger.
- Coloring machine.

Astatula, FL



- 100 acre located in Lake County, FL.
- Includes 5,000 sq. ft building.
- Sell over 20 kinds of mulch.
- Wood recycling collection yard.
- Retail mulch outlet.
- Central Florida ArborCare headquarters.

Central Florida ArborCare

TREE CARE DIVISION



- Tree Trimming and Removals.
- Commercial Property Maintenance.
- Certified arborist on staff.
- Over 40 years experience.
- Orange county contractor.
- Maintaining over 250 county buildings.

Cypress Sawmill

CONTINUED INFORMATION ON SAWMILL DIVISION



- We have kiln, storage for lumber and mulch bagging with a bagging line for B-grade mulch and a line for bark bagging.
- Operates with a highly trained team of sawmill workers.

Nature's Reflection

DIVISION OF MULCH MANUFACTURING, INC.



Cheetah
Coloring Systems

Mulch Manufacturing, Inc.
6747 Taylor Road S.W.
Reynoldsburg, OH 43068

Newest Technology Available

Makes dryer, lighter-weight products
Uses only 7 to 8 gallons of water/yard
(certified by an independent lab.)

Up to 125 yards per hour

Easy to operate

Low cost operation

Low initial investment

Video or CD available
Ask about Nature's Reflections
Colorant Products



rstarcher@mulchmfg.com (614)208-7905
jmerlin@mulchmfg.com (614)359-4249
www.natures-reflections.net



Cheetah family of Coloring Machines

By: Nature's Reflections

Cheetah Coloring System



Cheetah Cub



Cypress Log Inventory

LOCATED IN CALLAHAN, FL



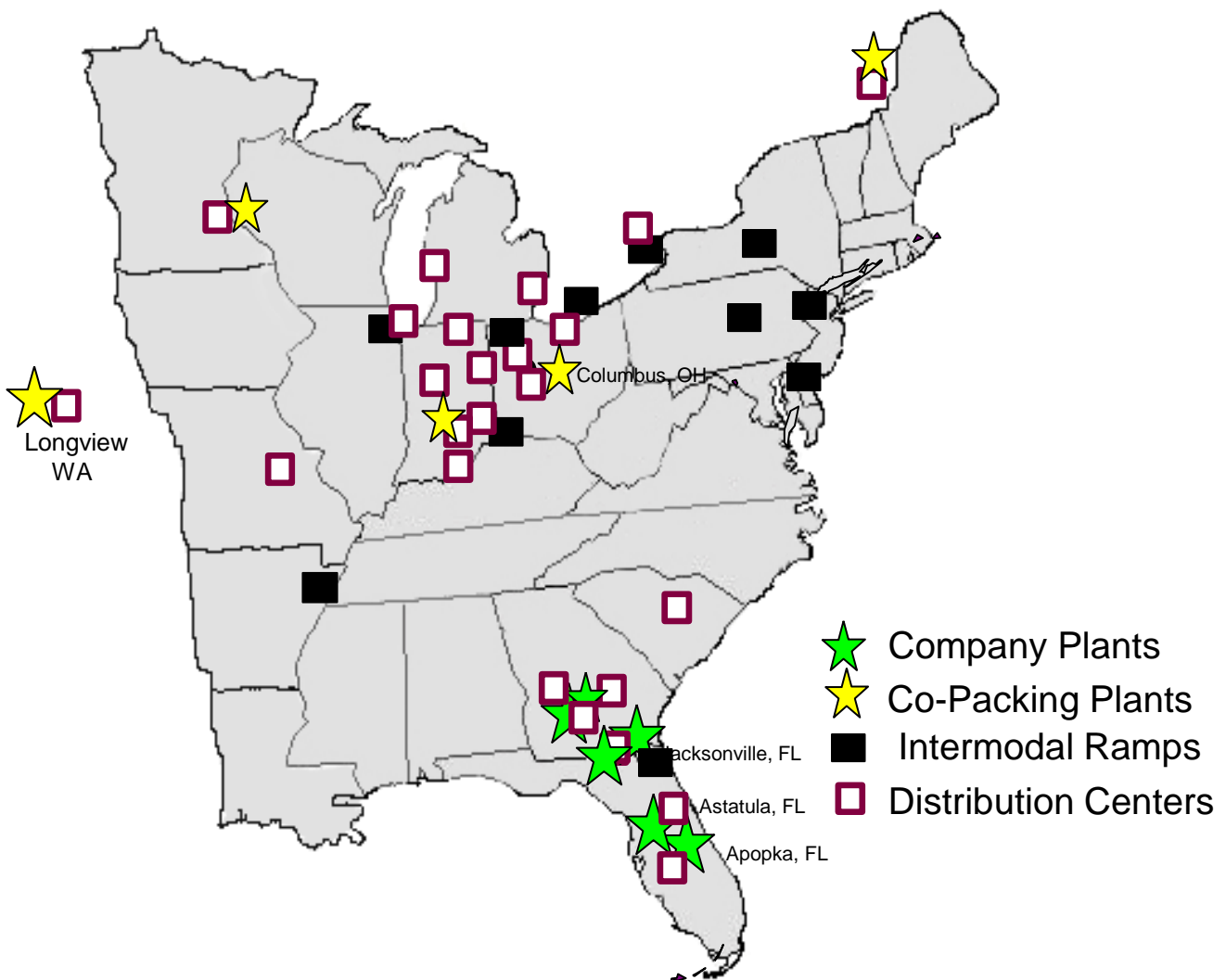
LOCATED IN GEORGIA



- Standing orders with loggers & landowners throughout the SE.
- Logs arriving daily, year-round.
- Professional log buyers managing procurement.
- Southern RED cypress.
- Largest Cypress inventory anywhere.
- Inventory rotated for quality control.
- Inventory separated for risk management.

Delivery Operations

- Six production plants.
- Five co-packing partners.
- Twenty-one distribution centers.
- Eleven railroad intermodal ramps.



Strengths with Rail

ROSE TRANSPORTATION



- Own our own intermodal brokerage.
- Direct contracts with both CSX and Norfolk Southern rail roads.
- Very high volume.
- Do our own origin drayage.
- Obtain rail equipment from many sources.
- We obtain equipment when others can't.

Tired of the same old Mulch?

Try Something New:

- **Cedar Royale**
100% pure Cedar bark
- **Cedar Rose**
100% pure Cedar mulch
- **Cypress Path & Play Chips**
100% pure Cypress
- **Baled Pine Straw**
Palletized & Stretch Wrapped
- **Pine Needle Mulch**
Crushed & Bagged
- **Pure & Black**
Pure Hardwood bark
enhanced with black pigment
- **Rustic Red**
Pure Pine Bark Mulch
enhanced with red pigment



Value Added Products

- **All Bark Cypress**
Pure Shredded Red Cypress Bark
- **All Bark Western Red Cedar**
Shredded bark from Western Red Cedar
- **Softscape**
“The Next Generation Mulch”
Colored wood ribbons with a new look and two years of color
- **Organic Cypress**
100% pure Cypress with no blend or foreign materials.



Nature's Reflections Softscape®

- Four year color retention
- Will not wash or blow away
- The look of pine straw
- Covers 50% more area
- Allows water to penetrate
- Light weight
- Available in multiple colors
- Overall BEST VALUE

